

WILGER Dual Spray 4+1 [DS41] Nozzle Bodies



The ultra-compact 'DS41' nozzle body integrates a single by-pass nozzle body (optional for spot spray or Dual PWM) as well as a robust 4-nozzle turret.

This new generation of nozzle bodies is designed to fit compact boom frames, providing the benefit of stacked nozzle bodies in a much smaller and robust package with new product designs to improve fit and function.

'Right' Version
41901-00

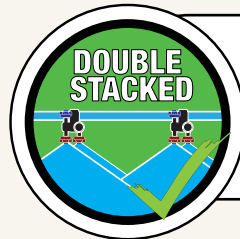


Spring-Lock Turret
Positive Turret Positioning



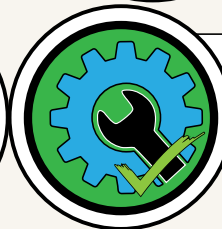
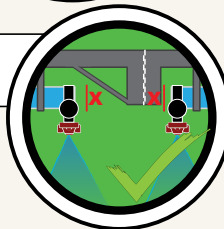
DOUBLE
STACKED

Ability to spray with
one or both nozzles
independent of each other.



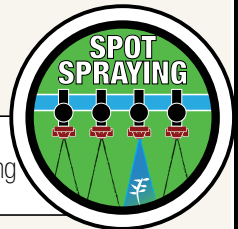
Super Compact
Space Saving

Chemical & Acid
Resistant



New
Robust Design

Compact for
10" spot spraying
spacing



COMBO-RATE® Boom End Flush Valves, QF100 Ultra Compact & Offset Elbows

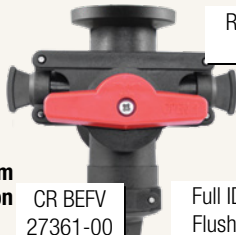
A series of super compact fittings including the last spray nozzle body, full flush valve, and recirculation ports.



Super
Compact
Boom
Ends



Cuts out Boom
Contamination



CR BEFV
27361-00

Recirculating
boom port

2x Stackable
COMBO-RATE
nozzle body port

Full ID ORS
Flush Valve



Engineered for
Recirculating
Spray Systems



Ultra Compact
nozzle body elbow



Compact Offset
nozzle body elbow

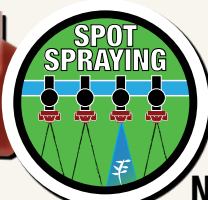
COMBO-JET® DX SPOT SPRAY NOZZLES & 30° Nozzle Adapter

Narrow-angle drift reduction nozzles for spot spraying



DX60-04

PWM
APPROVED



Available in

20°
40°
60°

Nozzle Angles

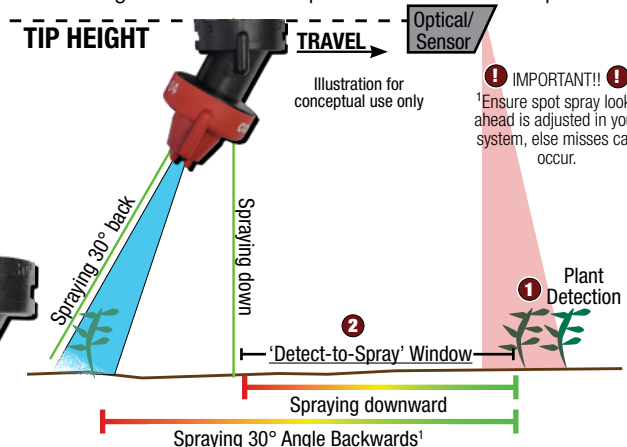
Available in DX sizes -015 to -125

NEW #40219-00
30° Adapter

For back or front,
single nozzle
spraying at 30°



Looking to spray faster with your spot spray system?
Consider using the new 30° adapter to tolerate faster speeds



NEW & FEATURED PARTS [Page 2]

COMBO-JET® 30/50 Adapter



40442-00

COMBO-JET outlet to
30° & 50° front/back
COMBO-JET outlets
-Quarter Turn-

Perfect for cereal-head fungicide &
other applications benefiting from angled spray



[TOP VIEW]

Use it with the new
DS41 nozzle body
for angled spraying
in tight sprayer
boom frames

INSTA-JET insert for COMBO-JET®



40262-00

The Insta-Jet insert snaps into
any COMBO-JET¹ nozzle to
increase responsivity to PWM
nozzle start and stop



What is
**high-responsivity
spraying?**



The Insta-Jet insert speeds up and extends the
duration of optimal spray pattern by reducing the
effective 'start' and 'stop' time required to produce
a desired spray. This is especially important for spot
spraying that has intermittent nozzle flow interruptions.

¹Not compatible w/ UR series or with use of select nozzles/adapters

30° Angled Nozzle Adapters

Nozzle adapters give the ability to angle a nozzle forward or backward, depending on
needs for crop-adapted spraying. Commonly outfitted on spot spraying systems to
increase potential spray speed.



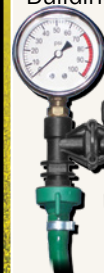
Combo-Jet to
Combo-Jet
30° Adapter
40219-00



Combo-Jet to
Square Lug
30° Adapter
40220-00

COMBO-RATE Manifolds

Replacing a yard sprayer manifold?
Building your own yard or ATV sprayer?



41115-03
(w/o barbs & gauge)

Combo-Rate® pre-built 3-Outlet Control Manifold

For setups
needing:

Pres. Gauge

Left/Right

Wing(s)

Spray Gun

Pressure

regulator

valve

Easily

Expandable

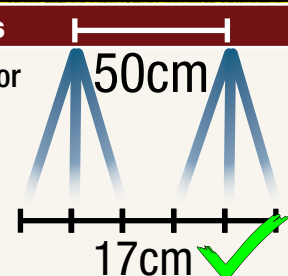
NEW 3-Hole Fertilizer Streamer (FS3) Nozzles

Precision molded & color-coded liquid fertilizer streamer caps for
consistent liquid fertilizer with less plant burn.

Includes metering orifice and deflector plate in a
single part number for easy ordering.



Improved
performance at
higher pressures



Available in sizes for 0.400L/min - 7.5L/min



Use Tip Wizard for Fertilizer Streaming Nozzle Selection

Simply input your intended application rate(s), speed, nozzle spacing
and you are well on your way to finding
the best fertilizer streamer nozzle for your spray applications.



COMBO-RATE® Top Turrets & Double-Down

A top take-off turret changes the orientation of the module for larger PWM solenoids.

The top-turret is available with new **double-down spray outlets**.

COMBO-RATE top-turrets are compatibility with all stacking COMBO-RATE parts.

41836-00
*solenoid not included



High Flow Nozzle Bodies (21/32")

Nozzle bodies for 21/32" high flow inlet holes available in COMBO-JET, COMBO-RATE and new DS41 nozzle body styles.



COMBO-RATE® Angled End Body for Fence-row spraying

41137-00



A new COMBO-RATE end body that provides a swivel joint that is **available to be locked in 15° increments¹** for crop adapted spraying or fence-row nozzle spraying.

Perfectly paired with the new COMBO-RATE Boom End Flush Valve for a compact and protected fence-row nozzle



¹Note on adjust-ability - Some sprayer manufacturers choose to have swivel end bodies permanently glued to position/angle. These swivel end bodies would NOT be adjustable, and removal of glue and re-adjustment would void warranty.

Quick Flange Sprayer Boom Fittings

The sprayer boom fittings for the next generation of sprayers, equipped to improve equipment efficiency and application consistency.

Build a better sprayer boom today!



Perfect Recirc. Booms



Cutting out Boom Contamination



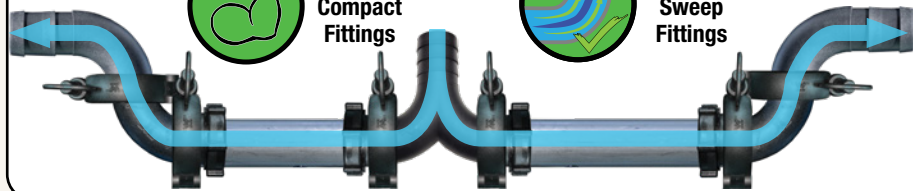
No Threads or Sealant Required



Stronger, Compact Fittings



High Flow Sweep Fittings



Compact Flush & Recirc



Future-proof for new fittings



Sweep Fittings



Easy Flange Boom End Conversion for QN SST



No Threaded Fittings



Easy Flange Boom End Conversion for 1" Pipe

New O-Ring Seal Fittings, Assemblies & Kits



ORS-M Straight Check Valves
20556-00
0.7bar Manual ON/OFF Check Valve, Straight



20576-00
50 mesh strainer assembly

IMPROVED EFM-JET DESIGN
Easier removal & insertion
shipping in 2024

20509-00
ORS-M to Double 1/4" Push-in-tube splitter

20644-00
4 Outlet EFM Manifold Kits w/ Manual ON/OFF Check Valves



New ORS-F Hose Barbs
20547-00
3/4" HB Straight with ORS-F u-clip



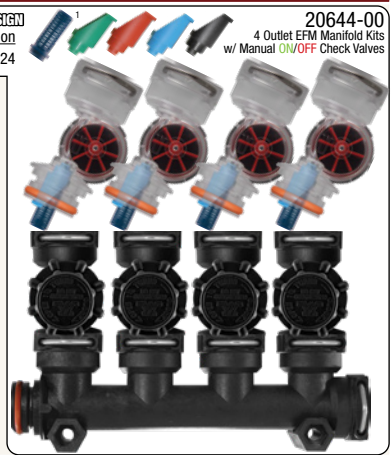
ORS in-line strainer attaches to any ORS fitting

20576-02
50 Mesh strainer cartridge



20549-00
ORS to Square Lug Outlet for Liquid Fertilizer Kits

NOTE: Ensure proper strain relief or mounting is added to ensure minimized stress on fitting joints in complex manifold configurations.



NEW & FEATURED PARTS [Page 4]

Wilger Electronic Flow Monitoring System ECU200 Release

A new compact ECU that includes the first 16CH node for more compact systems
ECU200 Series Kit (#20606-00) includes:



#20606-01 ECU ONLY

Back View: New position for ECU Serial Number
 (1 9 digit serials now used)



#20606-02
 Connects 'Node 1' quad-sensor harnesses A / B / C / D

Connects the battery harness to the ECU



#20606-03



4x #20585-00

12v battery harness #20603-02



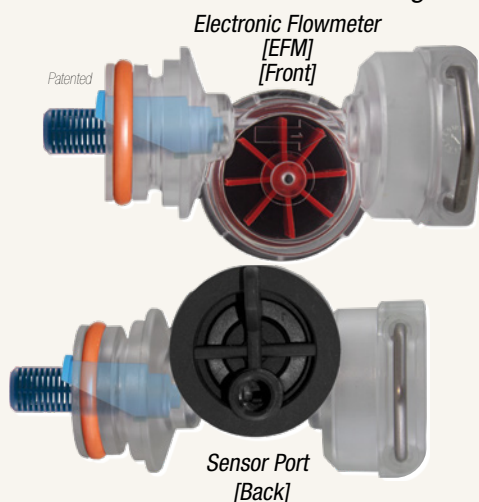
Antenna #20603-03

What about other EFM parts?

All parts beyond this kit are shared between ECU100 and ECU200 parts.

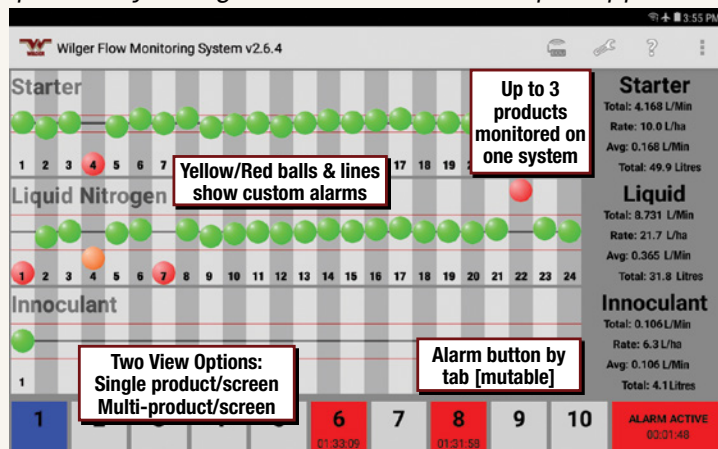
Wilger Electronic Row-By-Row Flow Monitoring System

The serviceable flowmeter designed & built specifically for agricultural chemical & liquid applications



Electronic Flowmeter [EFM] [Front]

Sensor Port [Back]



Fittings Swivel 360°



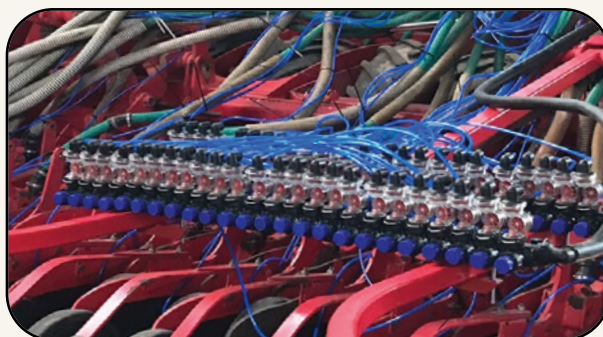
Modular Design for Any Size Equipment



Serviceable Flowmeter for Ag.



High Accuracy Flowmeter



EFM systems can be easily scaled to small or very large systems.

Wilger Product Literature & Tools



Wilger provides free printed product literature, prices lists and tools. Request a copy today. All brochures are also available at www.wilger.net



Tip Wizard Updates

Tip Wizard has new features coming! Double-down spraying, spot spraying and more!

Tip Wizard aims to lead the industry as the best spray tip calculator for broadcast applications.

WHERE TO BUY WILGER PRODUCT

To find a list of local dealers/retailers and distributors in your area, visit the WILGER.net 'WHERE TO BUY' page, to easily enter your address to find local Wilger product.