



TOTAL WASHDOWN SOLUTIONS



 **Save Water**  **Save Money**  **Save Time**  **Save Energy**

A Cleaning Product For Every Budget & Application



SprayNozzleENGINEERING
Total Spraying Solutions

Washdown Guns

Mini M-70 Washdown Gun	1
Mini M-70LF Washdown Gun	2
Hydro-Pro Washdown Gun	3
M-70 & S-70 Washdown Gun	4
TM-HBBB-001 & TM-HSBB-001 Washdown Gun.....	5
TM-HSBB-200 & TM-HSBB-300 Washdown Gun	6
TM-HBBB-001-HF Washdown Gun	7
Specialty Washdown Nozzles / Gun.....	8
HBBB-65 Washdown Trigger Gun	9
Lances & Gun Accessories	10

Guns & Accessories

Special Purpose Guns And Nozzles.....	11
---------------------------------------	----

Tank Cleaners

M-Series Tank Cleaning	12
Tank Cleaning Spray CIP Nozzles	13
HydroWhirl S Slotted Spray Nozzle	14
Gamajet PF	15
Gamajet 8 & Gamajet 4	16

Steam + Water Mixing Units

M-159TG & M-200TS.....	17
M-5000TG & M-5000TS	18



Lafferty Foamers & Sanitisers

Special Purpose Washdown Foamers & Sanitisers	19-20
---	-------

Spring Rewind Reels

Hannay Series SSN700	21
Hannay Series SSN800	22
Hannay Series SS800	23
Hannay Series SS900	24

Compact Manual Rewind Reels

Hannay Series SS1500	25
----------------------------	----

Manual Rewind Reels

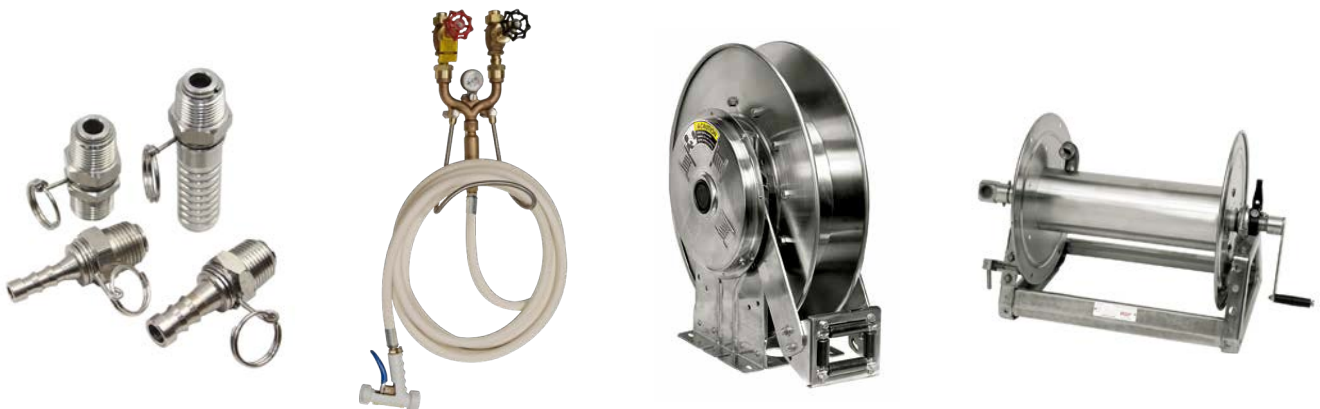
Hannay Series SS1800	26
Hannay Series SS4000	27
Hannay Series SS6000	28-29
Hannay Series SS7500	30
Hannay Series SS8000	31
Hannay Series SS9000	32

Manual Crank Rewind Reels

Pit Bull™ Series	33- 24
------------------------	--------

Hose Reel Package

35-36



Medium Flow Low Pressure

Mini M-70 Washdown Gun

Premium Range



Strahman, The Industry Leader, adds the Mini M-70 series to its family of Nozzles. The Mini-M-70 weighs only 1.8 lbs. and provides the same high quality as Strahman's premium heavy-duty M-70 Series nozzle.

- Long handle design grip for whole hand placement
- Weighs only 1.8 lbs
- Rev-o-cap renewable cartridge unit design for greater longevity
- Replaceable (heavy duty) renewable rubber cover available in black and white
- Stainless steel seat design prevents nozzle seat leakage
- Bronze or full Stainless Steel construction
- Instant water shut-off when trigger is released
- Includes 1/2", 5/8", 3/4" I.D. hose barb, or 3/4" GHT swivel adapter with locking ring

Max. Pressure (Bar)	Max. Flow (LPM)	Max. Temperature
10	27	93° C

Order Part Number	Material	Colour
Mini M-70	Bronze	Black
Mini M-75	Bronze	White
Mini S-70	Stainless Steel	Black
Mini S-75	Stainless Steel	White



Inlet: 3/8" NPTF

Swivel-Pro™ Adapter

Strahman Swivel-Pro™ swivel adapters feature an exclusive ergonomic design to increase nozzle control and allow circular, horizontal and vertical nozzle movements - while maximizing your comfort and safety.

Stainless steel construction for strength and durability, and it is supplied with vinyl boot for heat transfer protection.

Always consult factory for product suitability & technical data

Note: Not suitable for steam service. Can be used with Strahman steam water mixing stations.



Available in 1/2", 5/8", and 3/4" ID Hose Barb or 3/4" GHT.



Mini M-70LF Washdown Gun

Premium Range

The water efficient washdown nozzle for maximum water savings

The **Mini M-70LF Series** is designed for heavy duty cleaning in all industrial applications, and is suitable for both hot and cold wash down applications. This compact and easy to handle spray nozzle weighs only 0.8 kg yet it provides the same high quality product expected from the industry proven range of Strahman wash down equipment, whereby utilising the same modern and innovative engineering principles and premium quality parts.

Derived from the same family of Strahman premium heavy duty M-70 Series Nozzles, the **Mini M-70LF Series** by Spray Nozzle Engineering is a water efficient spray nozzle designed to reduce potential water wastage by providing an optimum cleaning performance at lower flow rates, suitable for most industrial wash down applications.

- Consistent spray pattern changes even at low flow rates
- Long handle design grip for whole hand placement
- Available in Bronze or full Stainless Steel construction
- Instant 'Water Shut-Off System' ensure no water loss after the trigger is released
- Stainless steel seat design stops water leakage at nozzle seat
- Heavy duty replaceable rubber cover, available in black or white
- Fully serviceable with readily available parts and service kits



Inlet: 3/8" NPTF

Max. Pressure (Bar)	Max. Flow (LPM)	Max. Temperature
10	13.5	93° C

Mini M-70LF Theoretical Pressure vs Flow Rate

Pressure (Bar)	0.5	1.0	2.0	3.0	4.0	5.0	6.5	10.0
Flow Rate (l/min)	4.5	5.0	6.2	7.3	8.5	9.5	10.5	13.5

Order Part Number	Material	Colour
Mini M-70LF	Bronze	Black
Mini M-75LF	Bronze	White
Mini S-70LF	Stainless Steel	Black
Mini S-75LF	Stainless Steel	White

Always consult factory for product suitability & technical data



Available in 1/2", 5/8", and 3/4" ID Hose Barb or 3/4" GHT.



Esc Veet Approved Product
(35-Low Flow Trigger Nozzle)

Medium Flow Low Pressure

Hydro-Pro 150® Washdown Gun

Premium Range



The water efficient washdown nozzle for maximum water savings

Strahman spray nozzles are proven to be the best on the market.

Hydro-Pro 150® is the most advanced spray nozzle, featuring a patented, locking trigger mechanism that allows users to lock in a desired spray pattern without having to maintain pressure on the trigger. It also reduces misdirected spraying.

- Modern and innovative engineering with premium quality parts
- Stainless steel housing for strength and durability
- Lightweight and ergonomically designed
- Waterproof nylon cover that resists cracks and abrasions
- Stays cool even when using water as hot as 93°C
- Spare parts available to service gun
- Available in black, red and white; with or without swivel adapter

Max. Pressure (Bar)	Max. Flow (LPM)	Max. Temperature
10	35	93° C

Order Part Number	Material	Colour
HP-150-BK	Stainless Steel	Black
HP-150-RE	Stainless Steel	Red
HP-150-WH	Stainless Steel	White



Inlet: 1/2" NPTF

Swivel-Pro™ Adapter

Strahman Swivel-Pro™ swivel adapters feature an exclusive ergonomic design to increase nozzle control and allow circular, horizontal and vertical nozzle movements - while maximizing your comfort and safety.

Stainless steel construction for strength and durability, and it is supplied with vinyl boot for heat transfer protection.

Always consult factory for product suitability & technical data

Note: Intended for water use only. Not suitable for steam service. Can be used with Strahman steam water mixing stations.



Available in 1/2", 5/8", and 3/4" ID Hose Barb or 3/4" GHT.



M-70 & S-70 Washdown Gun

Premium Range

The water efficient washdown nozzle for maximum water savings

Strahman spray nozzles are proven to be the best on the market.

- Modern and innovative engineering with premium quality parts
- Long handle design grip for whole hand
- Replaceable (heavy duty) renewable rubber cover placement
- Stainless steel seat design prevents nozzle seat leakage
- Instant water shut-off when trigger is released
- Spare parts available to service gun
- Available in black, red and white

Industry Applications

- Food / Dairy
- Kitchens / Hotels / Restaurants
- Beverage
- Pharmaceutical
- Meat / Fish / Poultry
- Other general industries

M-70 & S-70 Series

Max. Pressure (Bar)	Max. Flow (LPM)	Max. Temperature
10	37.5	93° C
Order Part Number	Material	Colour
M-70	Bronze	Black
M-75	Bronze	White
M-77	Bronze	Red
S-70	Stainless Steel	Black
S-75	Stainless Steel	White
S-77	Stainless Steel	Red



Inlet: 1/2" NPTF

Swivel-Pro™ Adapter

Strahman Swivel-Pro™ swivel adapters feature an exclusive ergonomic design to increase nozzle control and allow circular, horizontal and vertical nozzle movements - while maximizing your comfort and safety.

Stainless steel construction for strength and durability, and it is supplied with vinyl boot for heat transfer protection.

Always consult factory for product suitability & technical data

Note: Intended for water use only. Not suitable for steam service. Can be used with Strahman steam water mixing stations.



Available in 1/2", 5/8", and 3/4" ID Hose Barb or 3/4" GHT.

Medium Flow Low Pressure

TM-HBBB-001 & TM-HSBB-001 Washdown Gun

Economy Range

The water efficient washdown nozzle for maximum water savings

- Water-saving trigger nozzles
- Heavy duty protective covers & bumpers
- Bronze & stainless steel construction
- Variable spray patterns, trigger controlled
- Optional swivel attachments available
- Various colours to match HACCP zones
- Available in white, black, blue, yellow, red and grey.

Industry Applications

- Food / Dairy
- Kitchens / Hotels / Restaurants
- Beverage
- Pharmaceutical
- Meat / Fish / Poultry
- Other general industries



Stainless

Inlet: 1/2" BSPF
BRASS

TM-HBBB & TM-HSBB Series

Max. Pressure (Bar)	Max. Flow (LPM)	Max. Temperature
10	36	60° C
Order Part Number	Material	Colour
TM-HBBB-001	Bronze	Blue
TM-HSBB-001	Stainless Steel	Blue

Optional Accessories
Insulated Trigger Guard



Swivels Low Pressure Swivels - Stainless Steel

Order Part Number	Size	Materials
HB- 3/8-SS-SWV	1/2"M x 3/8" Hose	Stainless steel
HB- 1/2-SS-SWV	1/2"M x 1/2" Hose	Stainless steel
HB- 3/4-SS-SWV	1/2"M x 3/4" Hose	Stainless steel
HB- 1-SS-SWV	1/2"M x 1" Hose	Stainless steel
HB- 1/2-MxM-SS-SWV	1/2"M x 1/2" Male	Stainless steel
HB- 1/2-MxF-SS-SWV	1/2"M x 1/2" Female	Stainless steel



Always consult factory for product suitability & technical data

Note: Intended for water use only. Not suitable for steam service.

TM-HSBB-200 & TM-HSBB-300 Washdown Gun

Economy Range

The water efficient washdown nozzle for maximum water savings

- Water-saving trigger nozzles
- Heavy duty protective covers & bumpers
- Bronze & stainless steel construction
- Variable spray patterns, trigger controlled
- Optional swivel attachments available
- Various colours to match HACCP zones

TM-HSBB-300 Quick Release Coupler Outlet Gun

Max. Pressure (Bar)	Max. Flow (LPM)	Max. Temperature
10	36	60° C

To take foam rinsing lances

Industry Applications

- Food / Dairy
- Kitchens / Hotels / Restaurants
- Beverage
- Pharmaceutical
- Meat / Fish / Poultry
- Other general industries

TM-HSBB-200 Male 1/2" Threaded Outlet Gun

Max. Pressure (Bar)	Max. Flow (LPM)	Max. Temperature
10	36	60° C

To take threaded rinsing lances or nozzles

Order Part Number	Material	Colour
TM-HSBB-300-BL	Stainless Steel	Blue
TM-HSBB-200-BL	Stainless Steel	Blue

Swivels Low Pressure Swivels - Stainless Steel

Order Part Number	Size	Materials
HB- 3/8-SS-SWV	1/2"M x 3/8" Hose	Stainless steel
HB- 1/2-SS-SWV	1/2"M x 1/2" Hose	Stainless steel
HB- 3/4-SS-SWV	1/2"M x 3/4" Hose	Stainless steel
HB- 1-SS-SWV	1/2"M x 1" Hose	Stainless steel
HB- 1/2-MxM-SS-SWV	1/2"M x 1/2" Male	Stainless steel
HB-1/2-MxF-SS-SWV	1/2"M x 1/2" Female	Stainless steel

Always consult factory for product suitability & technical data

Note: Intended for water use only. Not suitable for steam service.



Inlet: 1/2" BSPF



Inlet: 1/2" BSPF



TM-HBBB-001-HF Washdown Gun

Economy Range

The water efficient washdown nozzle for maximum water savings

- Water-saving trigger nozzles
- Heavy duty protective covers & bumpers
- Bronze & stainless steel construction
- Variable spray patterns, trigger controlled
- Optional swivel attachments available
- Various colours to match HACCP zones

Industry Applications

- Food / Dairy
- Kitchens / Hotels / Restaurants
- Beverage
- Pharmaceutical
- Meat / Fish / Poultry
- Other general industries



Inlet: 1/2" BSPF

TM-HBBB-001-HF

Max. Pressure (Bar)	Max. Flow (LPM)	Max. Temperature	Material
10	60 ℓ/min	60° C	Brass
Order Part Number		Colour	
TM-HBBB-001-HF		Blue	

Optional Accessories
Insulated Trigger Guard



Swivels Low Pressure Swivels - Stainless Steel

Order Part Number	Size	Materials
HB- 3/8-SS-SWV	1/2"M x 3/8" Hose	Stainless steel
HB- 1/2-SS-SWV	1/2"M x 1/2" Hose	Stainless steel
HB- 3/4-SS-SWV	1/2"M x 3/4" Hose	Stainless steel
HB- 1-SS-SWV	1/2"M x 1" Hose	Stainless steel
HB- 1/2-MxM-SS-SWV	1/2"M x 1/2" Male	Stainless steel
HB- 1/2-MxF-SS-SWV	1/2"M x 1/2" Female	Stainless steel

Always consult factory for product suitability & technical data

Note: Intended for water use only. Not suitable for steam service.



Specialty Washdown Nozzles | Gun

Economy Range

The water efficient washdown nozzle for maximum water savings

- Water-saving twist nozzles
- Heavy duty rubber protective covers & bumpers
- Stainless steel construction
- Variable spray patterns, twist control
- Colour coded

TM-HSAN-100 Series

Max. Pressure (Bar)	Max. Flow (LPM)	Max. Temperature
10.3	140	75° C



Inlet: 1/2" BSPF

TM-HMAN-075 Series

Max. Pressure (Bar)	Max. Flow (LPM)	Max. Temperature
10.3	200	65° C



Inlet: 3/4 + 1" BSPF

TM-HLAN-100 Series

Max. Pressure (Bar)	Max. Flow (LPM)	Max. Temperature
10.3	450	65° C

TM-HPSB-100 Washdown Trigger Gun

- Soft spray shower pattern
- Plastic PA66 FDA construction
- Ergonomic in-line design
- Where light rinsing is required

Max. Pressure (Bar)	Max. Flow (LPM)	Max. Temperature
7	23	60° C



Inlet: 1/2" BSPF

TM-HAWB-100 Air Water Mix Trigger Gun

- Increase cleaning velocity with compressed air injection
- Aluminum construction
- Twin 10mm hose barb ports
- Light weight
- Built in hanging hook

Max. Pressure (Bar)	Max. Flow (LPM)	Max. Temperature
5	5	70° C



Inlet: 3/8" DUAL BARB

Always consult factory for product suitability & technical data

Medium Flow Low Pressure

HBBB-65 Washdown Trigger Gun

Economy Range

The water efficient washdown nozzle for maximum water savings

- Water-saving trigger nozzles
- Heavy duty protective covers & bumpers
- Bronze & stainless steel construction
- Variable spray patterns, trigger controlled
- Optional swivel attachments available
- Durable impact resistant molded handle

Industry Applications

- Food / Dairy
- Kitchens / Hotels / Restaurants
- Beverage
- Pharmaceutical
- Meat / Fish / Poultry
- Other general industries



Inlet: 1/2" BSPF

HBBB-65BS & HBBB-65RS

Max. Pressure (Bar)	Max. Flow (LPM)	Max. Temperature
20	60	90° C
Order Part Number		Colour
HBBB-65BS		Blue
HBBB-65RS		Red

Swivels Low Pressure Swivels - Stainless Steel

Order Part Number	Size	Materials
HB- 3/8-SS-SWV	1/2"M x 3/8" Hose	Stainless steel
HB- 1/2-SS-SWV	1/2"M x 1/2" Hose	Stainless steel
HB- 3/4-SS-SWV	1/2"M x 3/4" Hose	Stainless steel
HB- 1-SS-SWV	1/2"M x 1" Hose	Stainless steel
HB- 1/2-MxM-SS-SWV	1/2"M x 1/2" Male	Stainless steel
HB- 1/2-MxF-SS-SWV	1/2"M x 1/2" Female	Stainless steel

Always consult factory for product suitability & technical data

Note: Intended for water use only. Not suitable for steam service.



Medium - High Flow Low Pressure

Lances & Gun Accessories

Economy Range

Photo	Order Part Number	Material	Description
	TM-HBBB-220-LAN	Stainless steel	1/2" lance mounting gun, length 22cm
	TM-HSVB-100	Stainless steel	Guarded ball valve in stainless steel(316); 1/2" female x quick release coupler with rubber protection. Max. pressure: 20 Bar Max. temperature: 93° C
	TM-HSVB-200	Stainless steel	Shielded in stainless steel(304); 1/2" female x quick release coupler with rubber protection. Max. pressure: 20 Bar Max. temperature: 93° C
	TM-HSVB-300	Stainless steel	Shielded in stainless steel(304); Inlet and Outlet Connections: 1/2" female Max. pressure: 20 Bar Max. temperature: 93° C
	TM-SNQC-220-LAN	Stainless steel	Quick coupler lance x 1/2", length 22cm
	TM-SNQC-500-LAN	Stainless steel	Quick coupler lance x 1/2", length 50cm
	TM-SNQC-500-LAN-FN	Stainless steel	Stainless lance with protected foam nozzle, length 50cm
	TM-SFQC	Stainless steel	Quick coupler stainless adaptor with foam nozzle
	TM-SNF-220-LAN	Stainless steel	Threaded lance stainless (316) x 1/2" female, length 22cm
	TM-SNF-500-LAN	Stainless steel	Threaded lance stainless (316) x 1/2" female, length 50cm

Always consult factory for product suitability & technical data

Guns & Accessories

Special Purpose Guns And Nozzles

Economy Range

4840-BA Washdown Trigger Gun

- Water-saving trigger nozzles
- Heavy duty protective covers and bumpers
- Bronze and stainless steel construction
- Optional swivel attachments available
- Optional Flat Spray or Cone Spray Nozzle Tips available on request
- Suitable for foam application

Maximum Pressure (Bar)	10
Maximum Flow (LPM)	20
Maximum Temperature (°C)	80
Inlet (NTPF)	1/4"
Weight (Kg)	0.8



YG1732 Heavy Duty High Flow Gun

- Shockproof plastic housings
- Sturdy construction of Stainless steel & brass
- Ergonomic construction
- Trigger operation minimizes fatigue
- Minimum load loss
- Stainless steel body

Maximum Flow (LPM)	120
Minimum Pressure (Bar)	120
Maximum Pressure (Bar)	135
Maximum Temperature (°C)	95
Inlet (BSPF)	1/2"
Outlet (BSPF)	1/2"
Dimensions	8.5" x 8.6" x 2"1.3"
Weight (Kg)	1.25



YR36K Rotating Nozzlev

- Strong brass structure
- Highly shock resistant ceramic seat and nozzle
- Oversized bearings for long life
- Can be used in any position

Minimum Pressure (Bar)	80
Maximum Pressure (Bar)	250
Maximum Temperature (°C)	95
Inlet (BSPF)	1/4"
Weight (Kg)	0.2



Part Number	YR36K30	YR36K35	YR36K40	YR36K45	YR36K50	YR36K55	YR36K60	YR36K65	YR36K70	YR36K80
Size	3.0	3.5	4.0	4.5	5.0	5.5	6.0	6.5	7.0 w	8.0
Color Code	White	Brown	Yellow	Blue	Purple	Red	Green	Light blue	Orange	Silver

Always consult factory for product suitability & technical data



Rotating Tank Cleaning Spray CIP Nozzles

M-Series Tank Cleaning

As a direct replacement for spray balls in standard pressure applications, the M-Series delivers more efficient distribution, greater impact and faster C.I.P cycles. This means less waste water and chemical treatment costs, saving you time and money.



Customise Your M-Series Washer

To control flow, the M-Series tank cleaning nozzle uses a standard 10-slot flow director which is specially designed to provide superior tank cleaning results at reduced pressures and flows. If your needs are special, custom units using non-standard flow directors and rotors can help tailor your flow and performance to suit specific requirements. Slot combinations of 4, 6, and 8 are also available upon request.

SNE-M-50-II					
PRESSURE		FLOW RATE		WETTING RADIUS	
BAR	PSI	LPM	US GPM	METRE	FEET
1.4	20	76	20	1.8	6
2.1	30	95	25	2.1	7
2.8	40	110	29	2.1	7
3.4	50	125	33	1.8	6
4.1	60	132	35	1.5	5

SNE-M-30					
PRESSURE		FLOW RATE		WETTING RADIUS	
BAR	PSI	LPM	US GPM	METRE	FEET
1.4	20	87	23	Maximum coverage not applicable for close radius applications	
2.1	30	106	28		
2.8	40	121	32		
3.4	50	136	36		
4.1	60	148	39		

SNE-M-100-II					
PRESSURE		FLOW RATE		WETTING RADIUS	
BAR	PSI	LPM	US GPM	METRE	FEET
1.4	20	430	114	1.8	6
2.1	30	500	132	2.6	8
2.8	40	585	155	3	10
3.4	50	661	175	2.7	9
4.1	60	708	187	2.6	8

SNE-M-75-II					
PRESSURE		FLOW RATE		WETTING RADIUS	
BAR	PSI	LPM	US GPM	METRE	FEET
1.4	20	167	44	2.6	8
2.1	30	204	54	2.7	9
2.8	40	235	62	2.7	9
3.4	50	250	66	3.0	10
4.1	60	276	73	3.5	11

Tank Cleaning Spray CIP Nozzles

TW Tank Cleaning

- Clog-resistant spiral design
- Energy efficient; uses less water than conventional designs
- Compact design; fits small openings
- Easy to maintain
- Unique patterns that spray in opposing directions



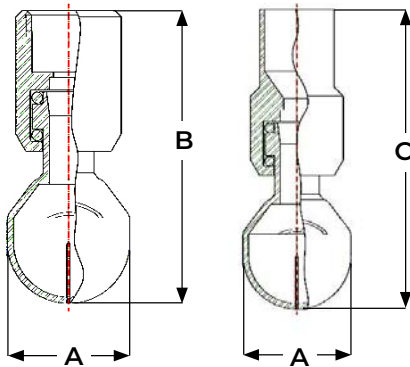
TW Coverage Chart - When spraying at 2 - 3 bar			
Pipe Size	Nozzle Number	Scrubbing Diameter (mm)	Rinsing Diameter (mm)
3/8	TW12	380	760
	TW14	460	1200
	TW16	610	1500
	TW20	910	2100
1/2	TW24	1200	2700
1	TW1	2400	6100

TW Coverage Chart - When spraying at 2 - 3 bar														
Pipe Size	Nozzle Number	Spray Angles	K Factor	Litres Per Minute						Approx. (mm)		Metal Dim. (mm)		
				0.7 Bar	1 Bar	2 Bar	3 Bar	4 Bar	5 Bar	Orifice Dia.	Free Pass. Dia.	A	B	C
3/8	TW12	180°, 270°	13.7	11.4	13.7	19.3	23.7	27.3	30.6	4.83	3.30	73.0	17.5	92.1
	TW14	180°, 270°	18.5	15.4	18.5	26.1	32.0	36.9	41.3	5.59	3.30			
	TW16	180°, 270°	24.2	20.2	24.2	34.2	41.8	48.3	54.0	6.35	3.30			
	TW20	180°, 270°	37.6	31.5	37.6	53.2	65.1	75.2	84.1	7.87	3.30			
1/2	TW24	270°	54.9	46.0	54.9	77.7	95.1	110	123	10.4	4.32	22.2	108.0	
1	TW1	270°	116	97.2	116	164	201	232	260	14.2	5.08			

Always consult factory for product suitability & technical data

HydroWhirl S Slotted Spray Nozzle

- Cleans more quickly, and uses less water and lower pressure than static tank washers
- Surface finish ideal for sanitary applications
- Stainless steel construction - corrosion resistant material
- Three connections: threaded, clip-on and welded
- Made from FDA approved materials for use in Clean-In-Place (CIP) applications
- Self-cleaning bearings
- Vigorous moving spray action
- Complete 360°omnidirectional coverage



All HydroWhirl S nozzle are available with ATEX approval for Zone 0.



HydroWhirl S Flow Rates and Dimensions												
Female Pipe Size	Nozzle Number	Litres Per Minute						Dimensions (mm)			Mass (g)	Coverage Diameter (m) @2.75 bar
		0.5 Bar	0.7 Bar	1 Bar	2 Bar	3 Bar	4 Bar	A	B	C		
1/8"	HWS-20-3	4.39	4.79	5.40	7.05	8.19	9.11	16.6	42.7	69.1	24.9	1.5
	HWS-20-4	7.41	8.10	9.20	12.2	14.2	15.9					1.8
	HWS-20	10.8	12.0	13.9	20.2	25.3	29.1					
3/8"	HWS-30-5	7.71	8.80	10.4	15.3	18.9	21.9	27.9	59.4	83.3	93.0	2.4
	HWS-30-6	19.5	21.0	23.4	29.8	34.2	37.6					
1/4"	HWS-30	19.1	21.7	25.7	37.0	45.4	53.1					
3/4"	HWS-40-7.5	18.8	21.3	25.1	35.7	43.8	50.7	38.9	92.7	108	306	3.4
	HWS-40-8	21.5	24.3	28.6	40.6	49.6	57.2					
	HWS-40-9	26.6	30.2	35.7	51.5	63.0	72.7					
	HWS-40	30.2	34.6	41.2	59.9	71.8	82.5					
	HWS-40HF-11	40.9	46.4	54.5	77.3	95.0	109	38.9	92.7	108	302	4.0
	HWS-40HF	50.4	57.3	67.5	97.0	116	132					
1 1/2"	HWS-50-16	81.6	92.0	108	154	188	218	69.1	154.9	180	1524	5.5
	HWS-50	125	142	167	238	293	338					

Rotating Tank Cleaning Nozzles

Designed with ergonomics in mind, the Gamajet provides the same high impact clean as traditional, larger tank cleaners but is lighter, shorter, and narrower. GJ devices are part of the world renowned Gamajet range of high impact tank cleaning devices, and is the perfect alternative to heavy impingement cleaners, time-intensive spray balls, and costly manual tank cleaning. Compact and efficient, the GJ allows for space saving while maintaining the impact, durability, and range required for optimal impingement tank cleaning. GJ devices are fluid-driven, eliminating the need for power assistance and is ideal for cleaning stubborn residues in large tanks in a variety of industries such as paper, pulp, chemical, breweries, food, industrial fermentation and many more applications requiring high impact cleaning.

Gamajet PF Tanks diameters 5 to 8 metres

Lubricant	Food grade
Max. throw length	14 - 26 m
Pressure	
Working pressure (Bar)	3.0 - 28.0
Recommended pressure (Bar)	4.0 - 20.0
Flow range (LPM)	75 - 450
Cycle time (min)	8 - 20
Materials	316L, PPS, PTFE EPDM (FKM and FFKM available)
Temperature	
Max. working temperature	90°C
Max. ambient temperature	140°C
Weight	4-.5 kg
Surface finish	0.8 um32 Ra
Connections	
Standard thread	1.1/2" (BSP) or NPT, female
Available option	1.5" weld, 1.5" tri-clamp, 1.5"



Always consult factory for product suitability & technical data

Rotating Tank Cleaning Nozzles

Gamajet 8 Tanks diameters 6 to 10 metres

Max. throw length	14 - 26 m
Pressure	
Working pressure (Bar)	3.0 - 28.0
Recommended pressure (Bar)	4.0 - 20.0
Flow range (LPM)	75 - 450
Cycle time (min)	8 - 20
Materials	1.4404 (316L), PPS, PTFE, FKM (EPDM and FFKM)
Temperature	
Max. working temperature	95°C
Max. ambient temperature	140°C
Weight	6.5 kg
Connections	
Standard thread	1.1/2" (BSP) or NPT, female
Available option	2" (BSP) or NPT, female



Gamajet 4 Tanks diameters 9 to 25 metres

Max. throw length	30.5 m
Pressure	
Working pressure (Bar)	3.0 - 21.0
Recommended pressure (Bar)	3.5 - 14.0
Flow range (LPM)	114 - 1211
Cycle time (min)	8 - 30
Materials	1.4404 (316L), PPS, FKM (EPDM and FFKM)
Temperature	
Max. working temperature	95°C
Max. ambient temperature	140°C
Weight	12.7 - 13.2 kg
Connections	
Standard thread	2" BSP, 2" NPT, female



M-159TG & M-200TS

M-159TG

Strahman M-159 (bronze) and M-750 (stainless steel) Mixing Units-Hose Stations are designed to thoroughly mix hot and cold water in any desired proportion.

Our Temperature Indicating (TG) models are equipped with a blending chamber and quick acting dial-type dual Fahrenheit and Centigrade temperature gauge, which accurately indicates the water's temperature exiting a specially designed blending chamber.

NOTE: Not suitable for steam service

M-159TG-Globe Series Mixing Unit-Hose Stations

- Simple visual recognition of valve position
- Flow rates adjustable from low to high

M-159TG-Ball Series Mixing Unit-with Ball Valves

- Single $\frac{1}{4}$ turn to On/Off position
- Simple visual recognition of valve position
- Easy to maintain and replace ball valves
- Flow rates adjustable from low to high
- Less wrist fatigue in turning valves to On/Off position

Max. Pressure (BAR)	Max. Flow (LPM)	Max. Temperature
10	38	93° C

M-200TS

The Model M-200TS features rugged construction and superb quality for superior thermostatic control. The unit's accurate and solid, liquid-filled thermostat allows you to set the exact output water temperature desired — from 27°C to 71°C. With its durable bronze body construction, the M-200TS valve features replaceable components that resist corrosion. Both the piston and liner are made of stainless steel material for long-lasting reliability. The unit also includes an integral shut-off valve. Backed by a one year warranty.

- Single lever On/Off operation
- Precise temperature control from 27°C to 71°C
- Adjustable temperature limit stop
- For maximum safety
- Replaceable components facilitate servicing
- Senses and compensates for temperature or pressure fluctuations (up to a 50% drop in inlet supply pressure)

Max. Pressure (BAR)	Max. Flow (LPM)	Max. Temperature
8.5	45	71° C



Always consult factory for product suitability & technical data



M-5000TG & M-5000TS

M-5000TG

This unit produces hot water instantly from a steady supply of steam and cold water. All mixing units-hose stations in the M-5000TG/M-5700TG series are equipped with a dial type gauge that indicates the wash water's exact temperature. Users can easily regulate the temperature by turning the unit's steam and cold water valves. As an added safety measure, these units shut off their steam source automatically if the cold water supply falls below 50 psi for any reason. This prevents hazardous steam from exiting the unit and causing steam burns.

This unit should be shut off when not in use for extended periods of time.

Max. Pressure (BAR)	Max. Flow (LPM)	Max. Temperature
10	27	93° C

M-5000TS

The Model M-5000TS lets you combine steam and cold water to produce hot water efficiently — without the safety concerns normally associated with steam use. Allowing for a maximum water temperature of 93°C, the automatic unit includes an easy-to-use temperature gauge that senses even slight variations to monitor water temperature accurately. The M-5000TS unit's thermostatically designed safety shut-off valve prevents the unit from overheating, and the thermostat is hydraulically formed, liquid-filled bellows.

- Thermostatically designed safety shut-off prevents unit from overheating
- Unit automatically compensates for water pressure fluctuations to maintain desired water temperature
- Thermostat is hydraulically formed, liquid-filled bellows
- Removable parts for easy cleanup and inspection

Max. Pressure (BAR)	Max. Temperature
10	93° C

It is recommended that a strainer and steam trap be used in conjunction with all of our steam mixing units. Foreign deposits in supply lines can affect ball check durability. Proper steam and water treatment is recommended to ensure proper performance and durability. This unit should be shut off when not in use for extended periods of time.

Note: Foreign deposits in supply lines can affect ball check durability.



Image shown: Bronze M-5000TS with premium hose assembly and M-70 Series nozzle

Lafferty Foamers & Sanitisers

Special Purpose Washdown Foamers & Sanitisers

Clean Efficiency - Save Water - Save Chemicals



Chemical Application Types

- Compressed air & airless foamers
- Sanitisers & foggers
- Portable, fixed & entryway
- Mixing solutions
- Poly mixing blocks & stainless for maximum corrosion resistance
- Pump fed & metered units available for correct dilution

Industry Applications

- Food
- Beverage
- Dairy
- Industry
- Transport
- Bio security
- Fixed & portable

Always consult factory for product suitability & technical data



SprayNozzle ENGINEERING
Total Spraying Solutions

Foamers - Sanitiser - Mixers



City Water Pressure
Foamers



Airless Foamers



Pressure Washer Foamers



Air Pump Foamers



Stainless Tank Foamers



Pump Up Foamers



Acid/Corrosive Foamers



Asphalt Release Foamers



Low Volume Foamers



Boosted & High Water
Pressure Foamers



Pump Fed Foamers

**Can't find what you need?
Ask our team!**

Spring Rewind Reels

Hannay Series SSN700

To handle 1/4" through 1/2" I.D. hose

Features

- Narrow frame and compact mounting base.
- Non-sparking ratchet assembly.
- Declutching arbor to prevent damage from reverse winding.
- Standard inlet: 90° stainless steel ball bearing swivel joint, 1/2" female NPT threads.
- Standard outlet: 1/2" female NPT threads.
- Standard pressures to 3000 psi (207 bar).
- Temperatures from +20°F to +400°F (-7°C to +204°C).
- Consult factory for other pressures and temperatures.
- 4-way roller assembly.
- Constant tension is available – consult factory.
- 304 stainless steel construction.

- Optional SST Mosmatic 1/2" balanced pressure swivel joint available, subtract 1.50" from "F" dimension, specify when ordering.

Used For

- Lubrication
- Potable water
- Chemical transfer
- Washdown
- Corrosive environments



Shown with optional polished finish

Parts drawing - ISO171

Model Number	Hose Capacity of Reel feet m				Approx. Weight lb. kg			Std. Roller Assy.	Reel Dimensions*** in. mm							
	I.D. in. mm	1/4 6	3/8 10	1/2 13	NET	UPS/ FedEx SHIP Wt.	Freight SHIP Wt.		A	B	C	E	F	G	H	X
	O.D. in. mm	5/8 16	3/4 19	7/8 22												
SSN716-16-17-10.5J	-	35	35	66	75*	108	N204S	10	4	10.5	18.5	13	17	9.12	8	
	-	11	11	30	34	49		254	102	267	470	330	432	232	203	
SSN716-19-20-10.5J	-	50	50	67	82*	109	N204S	10	4	10.5	20.75	13	20	10.62	8	
	-	15	15	30	37	49		254	102	267	527	330	508	270	203	
SSN716-23-24-15.5J	-	65	65	79	92*	114	N204S	10	4	15.5	23.75	13	24	12.62	8	
	-	20	20	36	42	52		254	102	394	603	330	610	321	203	
SSN716-23-24-15.5G	100	75	65	94	101*	129	N204S	10	4	15.5	23.75	13	24	12.62	8	
	30	23	20	43	46	59		254	102	394	603	330	610	321	203	
SSN716-25-26-15.5B	-	75	75	90	-	125	N204S	10	4	15.5	25.25	13	26	13.62	8	
	-	23	23	41	-	57		254	102	394	641	330	660	346	203	
†SSN718-25-26-15.5G	-	100	100	96	-	131	N206S	12	6	15.5	25.25	15	26	13.62	10	
	-	30	30	44	-	59		305	152	394	641	381	660	346	254	
SSN718-25-26-15.5A	-	100	100	106	-	141	N206S	12	6	15.5	25.25	15.75	26	13.62	10	
	-	30	30	48	-	64		305	152	394	641	400	660	346	254	

Notes:

1. Specifications subject to change.

2. Reel models and capacities shown are for standard drag applications; for vertical lift applications, consult factory.

3. Other sizes, from standard components, available on request.

4. Finish: Refer to page 2.

5. Be sure to check dimensions and weights prior to ordering.

NOTICE:


A flexible connector must be used between the inlet pipe and the inlet swivel joint.

* Dimensional weight applies when shipped as a parcel package (via FedEx or UPS Ground).


***X, Y indicate mounting holes. See page 2.

†Capacity based on low pressure air hose only. Not for vertical lift applications.

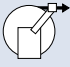
Available Roller Positions




SR (STD)



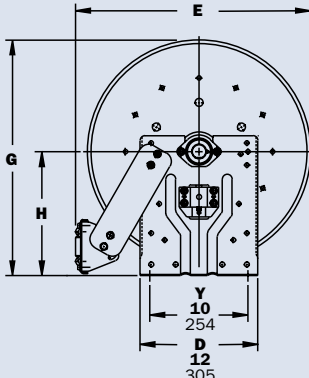
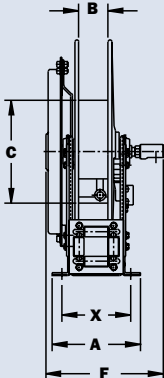
VR (OPT)



TR (OPT)



TR (Wallmount)



Spring Rewind Reels

Hannay Series SSN800

To handle 3/4" or 1" I.D. hose

Features

- Narrow frame and compact mounting base.
- Non-sparking ratchet assembly.
- Declutching arbor to prevent damage from reverse winding.
- Standard inlet: 90° stainless steel ball bearing swivel joint, 1" female NPT threads.
- Standard outlet: 1" female NPT threads.
- Standard pressures to 1000 psi (69 bar).
- Temperatures from +20°F to +400°F (-7°C to +204°C).
- Consult factory for other pressures and temperatures.
- 4-way roller assembly.
- Constant tension is available – consult factory.
- 304 stainless steel construction.

Used For

- Dairy
- Caustic materials
- Air / water
- Chemical transfer / food transfer



Standard configuration shown with optional polished finish

Parts drawing - ISO173

Model Number	Hose Capacity of Reel feet m			Approx. Weight lb. kg			Std. Roller Assy.	Reel Dimensions*** in. mm							
	I.D. in. mm	3/4 19	1 25	NET	UPS/ FedEx SHIP Wt.	Freight SHIP Wt.		A	B	C	E	F	G	H	X
	O.D. in. mm	1-9/32 33	1-1/2 40												
SSN816-19-20-10.5J	25 8	15 5	75 34	75 34	83* 38	110 50	N204S	10 254	4 102	10.5 267	20.75 527	14.25 362	20 508	10.62 270	8 203
†SSN818-23-24-10.5J	50 15	25 8	87 39	87 39	— —	122 55	N206S	12 305	6 152	10.5 267	23.75 603	16.25 413	24 610	12.62 321	10 254
SSN816-25-26-10.5B	60 18	35 11	96 44	96 44	— —	131 59	N204S	10 254	4 102	10.5 267	25.25 641	14.25 362	26 660	13.62 346	8 203
SSN818-25-26-10.5B	70 21	50 15	102 46	102 46	— —	137 62	N206S	12 305	6 152	10.5 267	25.25 641	16.25 413	26 660	13.62 346	10 254

Notes:

- Specifications subject to change.
- Reel models and capacities shown are for standard drag applications; for vertical lift applications, consult factory.
- Other sizes, from standard components, available on request.
- Finish: Refer to page 2.
- Be sure to check dimensions and weights prior to ordering.**

NOTICE: A flexible connector must be used between the inlet pipe and the inlet swivel joint.

* Dimensional weight applies when shipped as a parcel package (via FedEx or UPS Ground).

***X, Y indicate mounting holes. See page 2.

†Capacity based on low pressure air hose only. Not for vertical lift applications.

Available Roller Positions

SR (STD) VR (OPT) TR (OPT) TR (Wallmount)

Side View Dimensions: A, B, C, F

Front View Dimensions: E, G, H, X, Y, D

Y: 10, 254
D: 12, 305

Spring Rewind Reels

Hannay Series SS800

To handle 3/4" or 1" I.D. hose

Features

- Square tubing frame for heavy-duty applications.
- Non-sparking ratchet assembly.
- Declutching arbor to prevent damage from reverse winding.
- Standard inlet: 90° stainless steel ball bearing swivel joint, 1" female NPT threads.
- Standard outlet: 1" female NPT threads.
- Pressures to 1000 psi (69 bar).
- Temperatures from +20°F to +400°F (-7°C to +204°C).
- Consult factory for other pressures and temperatures.
- 4-way roller assembly.
- Constant tension is available – consult factory.
- 304 stainless steel construction.

Used For

- Dairy
- Caustic materials
- Air / water
- Chemical / food transfer



Standard configuration shown with optional polished finish

Parts drawing - ISO198

Model Number	Hose Capacity of Reel feet m			Approx. Weight lb. kg		Std. Roller Assy.	Reel Dimensions*** in. mm									
	I.D. in. mm	3/4 19	1 25	NET	SHIP		A	B	C	D	E	F	G	H	X	Y
	O.D. in. mm	1-9/32 33	1-1/2 40													
SS816-25-26-10.5B		60 18	35 11	96 44	131 59	R204S	9.25 235	4 102	10.5 267	25 635	26.12 663	14.75 375	25.88 657	13.5 343	4.5 114	21.75 552
SS818-25-26-10.5B		70 21	50 15	102 46	137 62	R206S	11.25 286	6 152	10.5 267	25 635	26.12 663	16.75 425	25.88 657	13.5 343	6.5 165	21.75 552
SS820-25-26-10.5A		85 26	75 23	131 59	166 75	R308S	13.25 337	8 203	10.5 267	25 635	27 686	19.5 495	25.88 657	13.5 343	8.5 216	21.75 552
SS820-30-31-10.5A		— —	100 30	137 62	172 78	R308S	13.25 337	8 203	10.5 267	28.5 724	30.5 775	19.5 495	31.38 797	17 432	8.5 216	25.25 641
SS820-30-31-15.5A		100 30	— —	145 66	180 82	R308S	13.25 337	8 203	15.5 394	28.5 724	30.5 775	19.5 495	31.38 797	17 432	8.5 216	25.25 641

Notes:

1. Specifications subject to change.
2. Reel models and capacities shown are for standard drag applications; for vertical lift applications, consult factory.
3. Other sizes, from standard components, available on request.
4. Finish: Refer to page 2.
5. **Be sure to check dimensions and weights prior to ordering.**

NOTICE: A flexible connector must be used between the inlet pipe and the inlet swivel joint.

***X, Y indicate mounting holes. See page 2.

Available Roller Positions

SR (STD)

VR (OPT)

TR (OPT)

TR (Wallmount)



Spring Rewind Reels

Hannay Series SS900

To handle single 1-1/4" or 1-1/2" I.D. hose

Features

- Rollformed channel frame construction.
- Non-sparking ratchet assembly.
- Declutching arbor to prevent damage from reverse winding.
- Standard inlet: 90° stainless steel swivel joint, 1-1/2" female NPT threads, and 2" Victaulic® groove.
- Standard outlet: 1-1/2" female NPT threads.
- Standard pressures to 600 psi (41 bar).
- Temperatures from -25°F to +250°F (-32°C to +121°C).
- 4-way roller assembly.
- SR and VR roller positions: swivel joint is standard on the right. TR roller positions: swivel joint is standard on the left. Other configurations available, must specify.
- Constant tension is available – consult factory.
- 304 stainless steel construction.

Used For

- Bulk Transfer
- Fuel Dispensing (Consult Factory)
- Suction/Discharge (Consult Factory)



Optional polished finish

Model Number	Hose Capacity of Reel feet m			Approx. Weight lb. kg		Standard Roller Assy.	Reel Dimensions*** in. mm								
	I.D. in. mm	1-1/4 32	1-1/2 38	NET	SHIP		A	B	D	E	F	G	H	X	Y
	O.D. in. mm	1-13/16 46	2-1/16 52				15.25 387	10 254	23.25 591	25.25 641	24 610	23.88 607	12.5 318	10.5 267	20 508
SS922-23-24B	40 12	25 8	104 47	139 63	R310	13.25 337	8 203	25 635	27 686	22.75 578	25.88 657	13.5 343	8.5 216	21.75 552	
SS920-25-26A	75 23	50 15	156 71	191 87	R310	15.25 387	10 254	28.5 724	30.5 775	24.75 629	31.38 797	17 432	10.5 267	25.25 641	

Notes:

A hose stop is necessary to keep spring from unwinding.

1. Specifications subject to change.

2. Reel models and capacities shown are for standard drag applications; for vertical lift applications, consult factory.

3. Other sizes, from standard components, available on request.

4. **Be sure to check dimensions and weights prior to ordering.**

NOTICE: A flexible connector must be used between the inlet pipe and the inlet swivel joint.

*** X, Y indicate mounting holes. See page 5.

Available Roller Positions

SR (STD)

VR (OPT)

TR (OPT)

TR (Wallmount)

Technical drawing of the reel assembly showing side and front views with dimensions A through Y labeled.

Compact Manual Rewind Reels

Hannay Series SS1500

To handle single 3/8" through 5/8" I.D. hose

Features

- Lightweight, compact reels designed for long lengths of hose.
- Manual rewind includes: cam-lock drag brake, spring actuated pin lock and direct crank rewind.
- Standard inlet: 90° stainless steel ball bearing swivel joint, 1/2" female NPT threads.
- Standard outlet: 1/2" female NPT threads.
- Rollers and roller mounting brackets are accessory items. Specify roller position.
- Pressures to 3000 psi (207 bar).
- Temperatures from +20°F to +400°F (-7°C to +204°C).
- Consult factory for other pressures and temperatures.
- Consult factory for power version.
- 304 stainless steel construction.

Used For

- Pest control
- Pressure washing
- Steam cleaning
- Washdown



Standard configuration shown with optional polished finish

Parts drawing - ISO175

Model Number	Hose Capacity of Reel feet m				Approx. Weight Crank Rewind lb. kg			Reel Dimensions*** in. mm				
	I.D. in. mm	3/8 10	1/2 13	5/8 16	NET	UPS/ FedEx SHIP Wt.	Freight SHIP Wt.	A	B	E	F	X
	O.D. in. mm	3/4 19	7/8 22	1 25								
SS1514-17-18	125	75	50	27	65*	62	11	6	16.5	19.25	9.5	
	38	23	15	12	30	28	279	152	419	489	241	
SS1520-17-18	275	175	125	29	80*	64	17	12	16.5	25.25	15.5	
	84	53	38	13	36	29	432	305	419	641	394	
SS1526-17-18	400	300	200	31	98*	66	23	18	16.5	31.25	21.5	
	122	91	61	14	45	30	584	457	419	794	546	
SS1530-17-18	500	375	275	33	110*	68	27	22	16.5	35.25	25.5	
	152	114	84	15	50	31	686	559	419	895	648	
SS1536-17-18	-	475	350	35	129*	70	33	28	16.5	41.25	31.5	
	-	145	107	16	59	32	838	711	419	1048	800	

Notes:

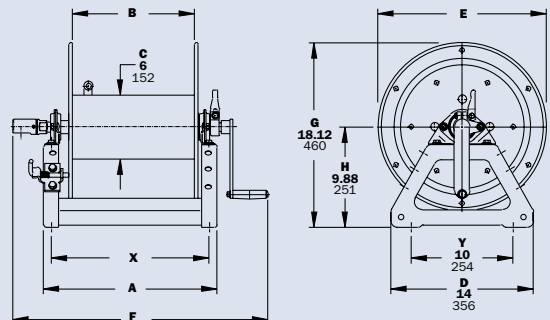
1. Specifications subject to change.
2. Upon request, reels can be supplied with drum lengths other than shown.
3. Dimension "F" is the overall length of standard model reels.
4. Manual rewind available in RT or LB configurations only.
5. Finish: Refer to page 2.

6. Be sure to check dimensions and weights prior to ordering.

NOTICE: A flexible connector must be used between the inlet pipe and the inlet swivel joint.

* Dimensional weight applies when shipped as a parcel package (via FedEx or UPS Ground).

***X, Y indicate mounting holes. See page 2.



Manual Rewind Reels

Hannay Series SS1800

To handle single 5/8" or 3/4" I.D. hose

Features

- Lightweight, compact reels designed for long lengths of hose.
- Manual rewind includes: cam-lock drag brake, spring actuated pin lock and direct crank rewind.
- Standard inlet: 90° stainless steel ball bearing swivel joint, 1" female NPT threads.
- Standard outlet: 3/4" female NPT threads.
- Rollers and roller mounting brackets are accessory items. Specify roller position.
- Pressures to 1000 psi (69 bar).
- Temperatures from +20°F to +400°F (-7°C to +204°C).
- Consult factory for other pressures and temperatures.
- 304 stainless steel construction.

Used For

- Pest control
- Pressure washing
- Steam cleaning
- Washdown



Standard configuration shown

Parts drawing - ISO176

Model Number	Hose Capacity of Reel feet m			Approx. Weight Crank Rewind lb. kg			Reel Dimensions*** in. mm				
	I.D. in. mm	5/8 16	3/4 19	NET	UPS/FedEx SHIP Wt.	Freight SHIP Wt.	A	B	E	F	X
	O.D. in. mm	1 25	1-9/32 40								
SS1816-17-18		75	50	28	80*	63	13	8	16.5	24.13	11.5
		23	15	13	36	29	330	203	419	613	292
SS1822-17-18		150	100	30	98*	65	19	14	16.5	30.13	17.5
		46	30	14	45	29	483	356	419	765	445
SS1826-17-18		200	125	32	98*	67	23	18	16.5	34.13	21.5
		61	38	15	45	30	584	457	419	867	546
SS1830-17-18		250	150	33	110*	68	27	22	16.5	38.13	25.5
		76	46	15	50	31	686	559	419	969	648
SS1836-17-18		300	200	36	129*	71	33	28	16.5	44.13	31.5
		91	61	16	59	32	838	711	419	1121	800

Notes:

1. Specifications subject to change.
2. Upon request, reels can be supplied with drum lengths other than shown.
3. Dimension "F" is the overall length of standard model reels.
4. Manual rewind available in RT or LB configurations only.
5. Finish: Refer to page 2.
6. **Be sure to check dimensions and weights prior to ordering.**

NOTICE: A flexible connector must be used between the inlet pipe and the inlet swivel joint.

* Dimensional weight applies when shipped as a parcel package (via FedEx or UPS Ground).

***X, Y indicate mounting holes. See page 2.

Manual Rewind Reels

Hannay Series SS4000

To handle 3/4" or 1" I.D. hose

Features

- Lightweight, compact reels designed for long lengths of hose.
- Manual rewind includes: cam-lock drag brake, spring actuated pin lock and removable direct crank rewind.
- Standard inlet: 90° stainless steel ball bearing swivel joint, 1" female NPT threads.
- Standard outlet: 1" female NPT threads.
- Rollers and roller mounting brackets are accessory items. Specify roller position.
- Pressures to 1000 psi (69 bar).
- Temperatures from +20°F to +400°F (-7°C to +204°C).
- Consult factory for other pressures and temperatures.
- 304 stainless steel construction.
-

Used For

- Food processing
- Bottling plants
- Fire protection
- Water supply
- Chemical transfer



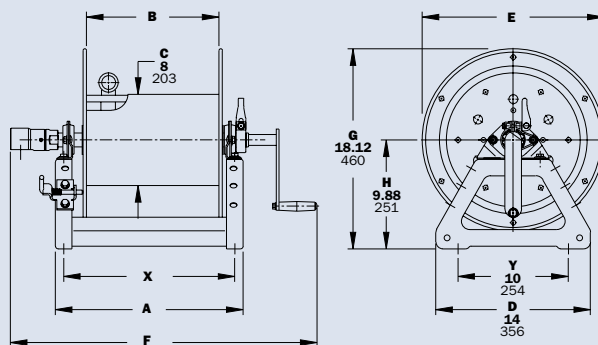
Standard configuration shown

Parts drawing - ISO178

Model Number	Hose Capacity of Reel feet m			Approx. Weight Crank Rewind lb. kg			Reel Dimensions*** in. mm				
	I.D. in. mm	3/4 19	1 25	NET	UPS/ FedEx SHIP Wt.	Freight SHIP Wt.	A	B	E	F	X
	O.D. in. mm	1-9/32 33	1-1/2 40								
SS4018-17-18		50	35	36	80*	71	15	10	16.5	27.75	13.5
		15	11	16	36	32	254	419	686	705	102
SS4024-17-18		100	50	46	98*	81	21	16	16.5	33.75	19.5
		30	15	21	45	37	533	406	419	857	495
SS4030-17-18		150	75	57	110*	92	27	22	16.5	39.75	25.5
		46	23	26	50	42	686	559	419	1010	648
SS4038-17-18		200	100	70	-	124	35	30	16.5	47.75	33.5
		61	30	32	-	56	889	762	419	1213	851

Notes:

1. Specifications subject to change.
 2. Upon request, reels can be supplied with drum lengths other than shown.
 3. Dimension "F" is the overall length of standard model reels. Crank rewind reels require 3-1/2" clearance to remove or install crank handle.
 4. Finish: Refer to page 2.
 5. **Be sure to check dimensions and weights prior to ordering.**
- NOTICE:** A flexible connector must be used between the inlet pipe and the inlet swivel joint.
- * Dimensional weight applies when shipped as a parcel package (via FedEx or UPS Ground).
- ***X, Y indicate mounting holes. See page 2.



Manual or Power Rewind Reels

Hannay Series SS6000

To handle single 1/2" - 1" I.D. hose.

Features

- Heavy-duty reel for longer lengths of hose.
- Choose gear-driven crank rewind or chain and sprocket drive powered by an electric, hydraulic or compressed air motor.
- Crank rewind reels supplied with pinion brake; power rewind reels with a strap brake.
- Standard inlet: 90° stainless steel ball bearing swivel joint, 1" female NPT threads.
- Standard outlet: 1" female NPT threads.
- Standard: inlet, outlet riser, and hub assembly are stainless steel.
- Standard pressures to 1000 psi (69 bar).
- Temperatures from -60°F to +250°F (-51°C to +121°C).
- 304 stainless steel construction.
- Rollers and roller mounting brackets are accessory items. Specify roller position.
- Consult factory for optional chain guard.

* Heavy-duty construction required for water blasting and sewer cleaning applications. Consult factory.

Used For

- Dairy
- Foam / Sanitising
- C.I.P / Washdown
- Chemical / Food Transfer



Optional Assembly
C2 roller top wind
and auxiliary
rewind shown

Manual or Power Rewind Reels

Hannay Series SS6000

To handle single 1/2" - 1" I.D. hose.

Model Number For power rewind see Note 5	Hose Capacity of Reel feet m				Approx. Weight Crank Rewind lb. kg see Note 4		Reel Dimensions*** in. mm									
	I.D. in. mm	1/2 13	3/4 19	1 25	NET	SHIP	A	B	D	E	F CRANK	F POWER	G	H	X	Y
	O.D. in. mm	7/8 22	1-9/32 33	1-1/2 38												
SS6024-19-21	200 61	100 30	60 18	85 39	127 58		21 533	15.5 394	20.5 521	18.75 476	25.38 645	28.5 724	21.5 546	12.12 308	13 330	16.75 425
SS6032-19-21	325 99	175 53	85 26	102 46	144 65		29.5 749	24 610	20.5 521	18.75 476	33.88 861	37 940	21.5 546	12.12 308	21.5 546	16.75 425
SS6024-23-24	400 122	150 46	125 38	92 42	134 61		21 533	15.5 394	20.5 521	22.75 578	25.38 645	28.5 724	23.5 597	12.12 308	13 330	16.75 425
SS6030-23-24	-	225 68	200 61	105 48	147 67		27.5 699	22 559	20.5 521	22.75 578	31.88 810	35 889	23.5 597	12.12 308	19.5 495	16.75 425
SS6038-23-24	-	300 91	250 76	120 54	162 73		35 889	29.5 749	20.5 521	22.75 578	39.38 1000	42.5 1080	23.5 597	12.12 308	27 686	16.75 425
SS6016-25-26	250 76	100 30	75 23	88 40	130 59		13 330	7.5 191	25.5 648	24.75 629	17.38 441	20.5 521	27.88 708	15.5 394	7.75 197	21.75 552
SS6022-25-26	450 137	175 84	125 38	100 45	142 64		19 483	13.5 343	25.5 648	24.75 629	23.38 594	26.5 673	27.88 708	15.5 394	11 279	21.75 552
SS6028-25-26	-	275 84	175 53	113 51	155 70		25.5 648	20 508	25.5 648	24.75 629	29.88 759	33 838	27.88 708	15.5 394	17.5 445	21.75 552
SS6018-30-31	400 122	200 61	150 46	101 46	151 68		15 381	9.5 241	25.5 648	28.75 730	19.38 492	22.5 572	29.88 759	15.5 394	7 178	21.75 552
SS6024-30-31	-	350 107	250 76	113 51	163 74		21 533	15.5 394	25.5 648	28.75 730	25.38 645	28.5 724	29.88 759	15.5 394	13 330	21.75 552
SS6028-30-31	-	-	300 91	121 55	171 78		25.5 648	20 508	25.5 648	28.75 730	29.88 759	33 838	29.88 759	15.5 394	17.5 445	21.75 552
†SS6028-33-34	-	-	400 122	129 59	179 81		25 635	20 508	31.5 800	31.75 806	29.62 752	32.75 832	33.62 854	17.75 451	17.5 445	27.75 705

Notes:

- Specifications subject to change.
- Upon request, reels can be supplied with drum lengths other than shown and with disc sizes in other diameters.
- Dimensions shown for reels up to and including 30-31 disc size reflect pressed frames. All others are rollformed channel frames.
- Weights shown in chart are for crank rewind models. ADD these amounts for power rewind models.

	Net lbs/kg	Ship lbs/kg
Electric	40/18.1	40/18.1
Hydraulic	20/9.1	20/9.1
Air	20/9.1	20/9.1

- When ordering power rewind models, prefix model number with:

A = Air Rewind -
Supplied with control valve and 18" air hose.

EP = Electric Rewind (1/2 HP) -
12v and 24v DC rewind reels are supplied with switch and solenoid; 115v AC rewind reels are not supplied with switch but can be ordered separately.

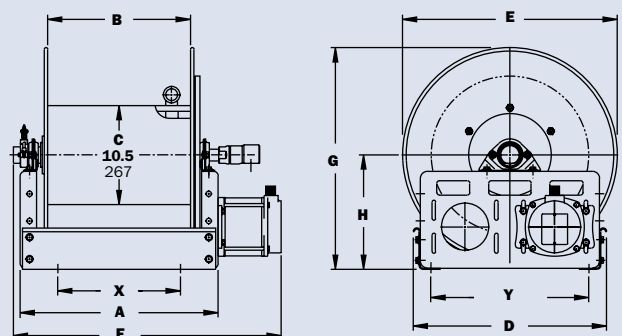
HD = Hydraulic Rewind -
Not supplied with control valve.

- Be sure to check dimensions and weights prior to ordering.

NOTICE: A flexible connector must be used between the inlet pipe and the inlet swivel joint.

*** X, Y indicate mounting holes.
See page 5.

† Some applications require a clutch/reduction unit.



Power rewind shown



Manual or Power Rewind Reels

Hannay Series SS7500

To handle single 1-1/4" - 1-1/2" I.D. hose.

Features

- Choose gear-driven crank rewind or chain and sprocket drive powered by an electric, hydraulic or compressed air motor.
- Crank rewind reels supplied with pinion brake and power rewind reels with a strap brake.
- Standard inlet: 90° stainless steel ball bearing swivel joint, 1-1/2" female NPT threads, and 2" Victaulic® groove.
- Standard outlet: flanged riser, 1-1/2" female NPT threads.
- Standard: inlet, outlet riser, and hub assembly are stainless steel.
- Standard pressures to 600 psi (41 bar), available up to 1000 psi (69 bar) – must specify.
- Temperatures from -25°F to +250°F (-32°C to +121°C), optional temperatures to +400°F (+204°C) – must specify.
- Rollers and roller mounting brackets are accessory items. Specify roller position.

- Consult factory for optional chain guard.
- 304 stainless steel construction.

Used For

- Dairy
- Foam / Sanitising
- C.I.P / Washdown
- Chemical / Food Transfer



Model Number For power rewind see Note 5	Hose Capacity of Reel feet m			Approx. Weight Crank Rewind lb. kg see Note 4		Reel Dimensions*** in. mm									
	I.D. in. mm	1-1/4 32	1-1/2 38	NET	SHIP	A	B	D	E	F CRANK	F POWER	G	H	X	Y
	O.D. in. mm	1-13/16 46	2-1/16 52												
SS7528-19-21	70	50	104	146	25.5	20	20.5	18.75	32	33	21.5	12.12	17.5	16.75	
	21	15	47	66	648	508	521	476	813	838	546	308	445	425	
SS7538-23-24	175	100	130	172	35	29.5	20.5	22.75	41.5	42.5	23.5	12.12	27	16.75	
	53	30	59	78	889	749	521	578	1054	1080	597	308	686	425	
SS7520-25-26	75	50	106	148	17	11.5	25.5	24.75	23.5	24.5	27.88	15.5	9	21.75	
	23	15	48	67	432	292	648	629	597	622	708	394	229	552	
SS7528-25-26	150	100	123	165	25.5	20	25.5	24.75	32	33	27.88	15.5	17.5	21.75	
	46	30	56	75	648	508	648	629	813	838	708	394	445	552	
SS7522-30-31	125	100	118	168	19	13.5	25.5	28.75	25.5	26.5	29.88	15.5	11	21.75	
	38	30	54	76	483	343	648	730	648	673	759	394	279	552	
†SS7528-30-31	200	150	131	181	25.5	20	25.5	28.75	32	33	29.88	15.5	17.5	21.75	
	61	46	59	82	648	508	648	730	813	838	759	394	445	552	
†SS7526-33-34	200	175	133	183	22.5	17.5	31.5	31.75	29.25	30.25	33.62	17.75	15	27.75	
	61	53	60	83	572	445	800	806	743	768	854	451	381	705	

Notes:

1. Specifications subject to change.
2. Upon request, reels can be supplied with drum lengths other than shown and with disc sizes in other diameters.
3. Dimensions shown for reels up to and including 30-31 disc size reflect pressed frames. All others are rollformed channel frames.
4. Weights shown in chart are for crank rewind models. ADD these amounts for power rewind models.

	Net lbs /kg	Ship lbs /kg
Electric	40/18.1	40/18.1
Hydraulic	20/9.1	20/9.1
Air	20/9.1	20/9.1

5. When ordering, prefix model number with:

A = Air Rewind – Supplied with control valve and 18" air hose.

EP = Electric Rewind (1/2 HP) – 12v and 24v DC rewind reels are supplied with switch and solenoid; 115v AC rewind reels are not supplied with switch but can be ordered separately.

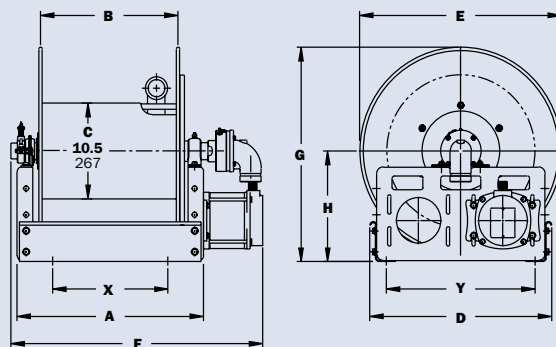
HD = Hydraulic Rewind – Not supplied with control valve.

6. Be sure to check dimensions and weights prior to ordering.

NOTICE: A flexible connector must be used between the inlet pipe and the inlet swivel joint.

*** X, Y indicate mounting holes. See page 5.

†Some applications require a clutch/reduction unit.



Power rewind shown

Manual or Power Rewind Reels

Hannay Series SS8000

To handle single 1-1/2" - 2" I.D. hose.

Features

- Heavy-duty reel designed for longer lengths and larger diameters of hose through 2" I.D.
- Choose gear-driven crank rewind or chain and sprocket drive powered by an electric, hydraulic or compressed air motor.
- Crank rewind reels supplied with a pinion brake; power rewind reels with a strap brake.
- Standard inlet: 90° stainless steel ball bearing swivel joint, 2" female NPT threads.
- Standard outlet: flanged riser, 2" female NPT threads.
- Standard: inlet, outlet riser, and hub assembly are stainless steel.
- Pressures to 600 psi (41 bar).
- Temperatures from -25°F to +250°F (-32°C to +121°C), optional temperatures to +400°F (+204°C) – must specify.
- Consult factory for other pressures and temperatures.
- Rollers and roller mounting brackets are accessory items. Specify roller position.

- Consult factory for optional chain guard.
- 304 stainless steel construction.

Used For

- Bulk Transfer
- Spray Dry Chamber Washing
- Chemical Transfer



Model Number <small>For power rewind see Note 4</small>	Hose Capacity of Reel feet m			Approx. Weight Crank Rewind lb. kg <small>see Note 3</small>		Reel Dimensions*** in. mm									
	I.D. in. mm	1-1/2 38	2 51	NET	SHIP	A	B	D	E	F CRANK	F POWER	G	H	X	Y
	O.D. in. mm	2-1/16 52	2-9/16 65												
SS8234-26-27		80 24	60 18	120 54	170 77	26.25 667	20 508	27 686	25.75 654	33.75 857	34.75 883	26.62 676	13.75 349	18.75 476	23.25 591
SS8238-26-27		100 30	75 23	145 66	195 88	30.25 768	24 610	27 686	25.75 654	37.75 959	38.75 984	26.62 676	13.75 349	22.75 578	23.25 591
SS8246-26-27		145 44	100 30	196 89	245 112	38.25 972	32 813	27 686	25.75 654	45.75 1162	46.75 1188	26.62 676	13.75 349	30.75 781	23.25 591
SS8226-33-34		85 26	60 18	80 36	150 68	17.75 451	11.5 292	31.5 800	31.75 806	25.25 641	26.25 667	33.38 848	17.75 445	10.25 260	27.75 705
SS8234-33-34		150 46	115 35	133 60	230 105	26.25 667	20 508	31.5 800	31.75 806	33.75 857	34.75 883	33.38 848	17.75 445	18.75 476	27.75 705
SS8238-39-40		340 104	225 69	218 99	420 191	30.25 768	24 610	40 1016	39 991	37.75 959	38.75 984	39.88 1013	20.38 518	22.75 578	37 940

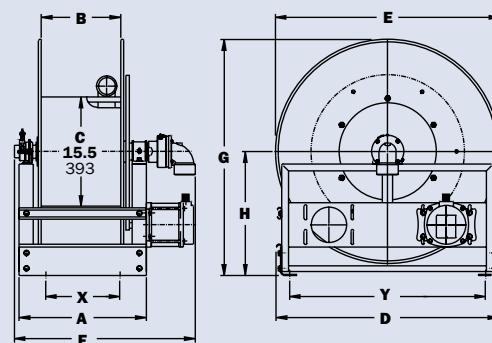
Notes:

1. Specifications subject to change.
2. Upon request, reels can be supplied with drum lengths other than shown and with disc sizes in other diameters.
3. Weights shown in chart are for crank rewind models. ADD these amounts for power rewind models.

	Net lbs./kg	Ship lbs./kg
Electric	40/18.1	40/18.1
Hydraulic	20/9.1	20/9.1
Air	20/9.1	20/9.1

4. When ordering power rewind models, prefix model number with:
A = Air Rewind – Supplied with control valve and 25" air hose.
EP = Electric Rewind (1/2 HP) – 12v and 24v DC rewind reels are supplied with switch and solenoid; 115v AC rewind reels are not supplied with switch but can be ordered separately.
HD = Hydraulic Rewind – Not supplied with control valve.
5. Be sure to check dimensions and weights prior to ordering.

NOTICE: A flexible connector must be used between the inlet pipe and the inlet swivel joint.
 *** X, Y indicate mounting holes. See page 5.



Power rewind shown



Manual or Power Rewind Reels

Hannay Series SS9000

To handle single 2-1/2" - 3" I.D. hose.

Features

- Heavy-duty reel designed for longer lengths and larger diameters of hose through 3" I.D.
- Choose gear-driven crank rewind or chain and sprocket drive powered by an electric, hydraulic or compressed air motor.
- Crank rewind reels supplied with a pinion brake; power rewind reels with a strap brake.
- Standard inlet: 90° stainless steel ball bearing swivel joint, 3" female NPT threads.
- Standard outlet: flanged riser, 3" female NPT threads.
- Standard: outlet riser, and hub assembly are stainless steel.
- Pressures to 300 psi (21 bar).
- Temperatures from -50°F to +180°F (-45°C to +82°C).
- Consult factory for other pressures and temperatures.
- Rollers and roller mounting brackets are accessory items. Specify roller position.
- Consult factory for optional chain guard.
- 304 stainless steel construction.

Used For

- Bulk Transfer
- Spray Dry Chamber Washing
- Chemical Transfer



Model Number For power rewind see Note 4	Hose Capacity of Reel feet m			Approx. Weight Crank Rewind lb. kg see Note 3		Reel Dimensions*** in. mm									
	I.D. in. mm	2-1/2 64	3 76	NET	SHIP	A	B	D	E	F CRANK	F POWER	G	H	X	Y
	O.D. in. mm	3-3/16 81	3-3/4 95												
SS9332-33-34	30	25	147	217		23.75	17.5	31.5	31.75	33.75	33.25	33.88	18	16.25	27.75
	9	8	67	98		603	445	800	80	857	845	861	457	413	705
SS9338-33-34	45	35	187	257		30.25	24	31.5	31.75	40.25	39.75	33.88	18	22.75	27.75
	14	11	85	117		768	610	800	807	1022	1010	861	457	578	705
SS9346-33-34	60	50	237	372		38.25	32	31.5	31.75	48.25	47.75	33.88	18	30.75	27.75
	18	15	108	169		972	813	800	807	1226	1213	861	457	781	705
SS9338-39-40	90	80	239	480		30.25	24	40	39	40.25	39.75	40.38	20.88	22.75	37
	27	24	108	218		768	610	1016	991	1022	1010	1026	530	578	940
SS9334-45-46	130	115	361	525		26.25	20	46	45	36.25	35.75	46.38	23.88	18.75	43
	40	35	164	239		667	508	1168	1143	921	908	1178	607	476	1092

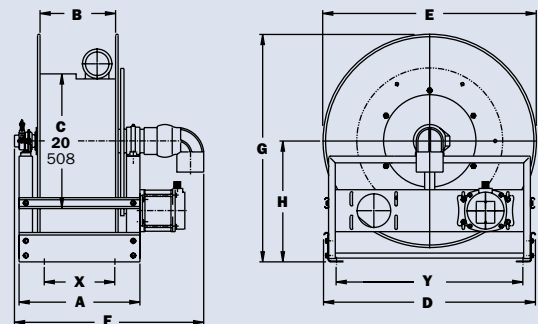
Notes:

1. Specifications subject to change.
2. Upon request, reels can be supplied with drum lengths other than shown and with disc sizes in other diameters.
3. Weights shown in chart are for crank rewind models. ADD these amounts for power rewind models.

	Net lbs/kg	Ship lbs/kg
Electric	40/18.1	40/18.1
Hydraulic	20/9.1	20/9.1
Air	20/9.1	20/9.1

4. When ordering power rewind models, prefix model number with:
A = Air Rewind -
 Supplied with control valve and 25" air hose.
EP = Electric Rewind (1/2 HP) -
 12v and 24v DC rewind reels are supplied with switch and solenoid; 115v AC rewind reels are not supplied with switch but can be ordered separately.
HD = Hydraulic Rewind -
 Not supplied with control valve.
5. Be sure to check dimensions and weights prior to ordering.

NOTICE: A flexible connector must be used between the inlet pipe and the inlet swivel joint.
 *** X, Y indicate mounting holes. See page 5.



Power rewind shown

Manual Crank Rewind Reels

Pit Bull™ Series

To handle single 5/8" or 3/4" I.D. hose

- Same patented Pit Bull™ gearbox now in manual crank rewind
- Stainless Steel full flow hub
- Stainless Steel fasteners
- Stainless Steel hose guide
- Standard full flow 90° Swivel inlet / outlet
- Full range of easy to bolt-on accessories: automatic rewind, automatic clutch, long range remote control and more



Series ~147

to handle single 1/4" through 1/2" I.D. hose

Specifications	
Female NPT Threads	1/2"
Pressures	to 344 bar/5000 psi
Temperatures	from -7°C to +204°C

(Consult factory for other pressures & temperature)

Use for

- Lubrication
- Air/Water/Coolant
- Wash Down
- Air Tools
- High Pressure Grease



Series ~147.5

to handle single 3/4" I.D. hose

Specifications	
Female NPT Threads	3/4"
Pressures	to 310 bar/4500 psi
Temperatures	from -40°C to +121°C

(Consult factory for other pressures & temperature)

Use for

- Fuel Delivery*
- Air/Water/Coolant
- Waste Oil Evacuation**
- Fire fighting
- Wash Down



Series ~148

to handle single 3/4" through 1" I.D. hose

Specifications	
Female NPT Threads	1"
Pressures	to 207 bar/3000 psi
Temperatures	from -51°C to +121°C

(Consult factory for other pressures & temperature)

Use for

- Fuel Delivery*
- Air/Water/Coolant
- Waste Oil Evacuation**
- Bulk Transfer Grease
- Fire fighting



Series ~149

to handle single 1 1/4" through 1 1/2" I.D. hose

Specifications	
Female NPT Threads	1 1/2"
Pressures	to 41 bar/600 psi
Temperatures	from -51°C to +79°C

(Consult factory for other pressures & temperature)

Use for

- Air/Water/Coolant
- Wash Down
- Fuel Delivery*
- Waste Oil Evacuation**



Manual Crank Rewind Reels

Pit Bull™ Series

To handle single 5/8" or 3/4" I.D. hose

Part No.	148	-	M	PB25-220-650	TG	D	3K
----------	-----	---	---	--------------	----	---	----

Series	Motor	Model	Guide Position	Arm	Rating
147 = 13NB	M = Manual	220	TG	S = Single	0.6K = 41 Bar
147.5 = 19NB		270	SG	D = Dual	1.5K = 103 Bar
148 = 25NB		290	VG		3K = 207 Bar
149 = 38NB		355			4.5K = 310 Bar

Full range & technical data available in main catalogue. Custom & stainless steel reels also available

Model Number		Hose Capacity of Reel (m)							Max. PSI BarG	Guide Arm	Approx. Weight (kg)		Reel Dimensions*** (mm)				
	I.D. (mm) I.D. (in)	6 1/4"	10 3/8"	13 1/2"	19 3/4"	25 1"	32 1-1/4"	38 1-1/2"			NET	FRT. SHIP WT.	A	B	F MANUAL	W	X
	O.D. (mm) O.D. (in)	16 5/8"	19 3/4"	22 7/8"	33 1-9/32"	40 1-9/16"	46 1-13/16"	52 2-1/16"									
147 Series	MPB15-220-650	189	130	96	-	-	-	-	344	Dual	74	84	365	220	395	215	185
	MPB15-270-650	218	153	117	-	-	-	-	344	Dual	73	83	405	250	422	256	226
	MPB15-290-650	261	177	138	-	-	-	-	344	Dual	71	81	425	290	465	275	245
147.5 Series	MPB20-220-650	-	-	-	39	-	-	-	310	Dual	73	83	360	220	370	215	185
	MPB20-270-650	-	-	-	45	-	-	-	310	Dual	73	83	405	250	375	256	226
	MPB20-290-650	-	-	-	51	-	-	-	310	Dual	72	82	425	290	465	275	245
148 Series	MPB25-220-650	-	-	-	39	25	-	-	207	Dual	72	82	360	220	370	215	185
	MPB25-270-650	-	-	-	45	31	-	-	207	Dual	72	82	405	250	375	256	226
	MPB25-290-650	-	-	-	51	36	-	-	207	Dual	72	82	425	290	465	275	245
	MPB25-355-650	-	-	-	64	46	-	-	207	Dual	77	87	485	350	535	335	304
	MPB25-425-650	-	-	-	84	51	-	-	207	Dual	87	97	585	425	575	405	375
149 Series	MPB40-290-650	-	-	-	-	-	22	19	41	Dual	78	88	425	290	535	275	245
	MPB40-355-650	-	-	-	-	-	26	23	41	Dual	77	87	485	350	535	335	304
	MPB40-425-650	-	-	-	-	-	33	30	41	Dual	87	97	560	425	640	405	375

Notes:

- Specifications subject to change without notice
- Other sizes, from standard components, available upon request
- Weights shown above are for manual rewind models
- Specify if evacuation/suction application prior
- Be sure to check dimensions and weight prior to ordering
- Refer to factory for operating temperatures

Optional Extras:

- Guide rollers or new FlatWinder™ Level Wind System for Easy Hose Layering on Spool
- Tension brake system or pin lock available
- Refer to Factory for Operating Temperatures
- Full range of easy to bolt-on accessories: Automatic Rewind, Automatic Clutch, Long Range Remote Control and more
- Other Crank Handle positions available upon request

Notice: A flexible connector must be used between the supply inlet pipe into the hose reel inlet swivel joint.

*** w, x, y and z indicate mounting holes.



TG (STD)

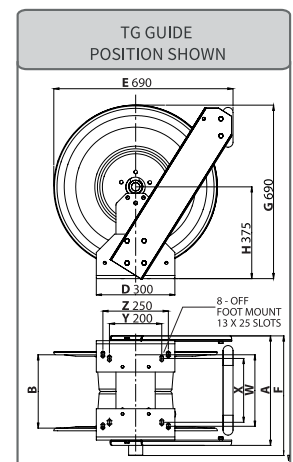


SG (OPT)



VG (OPT)

Available Hose Guide Positions



ORDERING EXAMPLE

Manual crank rewind reel to handle 22 Metres x 1" I.D. hose with Single TG Guide
Order as Follows:
148-MPB25-220-650 TGS-3K

UPGRADE TO HOSE REEL PACKAGE

Reduce trip hazards & hose replacement costs | Control rewind speeds

C.I.P Reels Bulk Delivery Custom Application

Reduce large diameter hose handling injuries
associated with manual C.I.P hose

Full stainless steel hub and swivels.
Gearbox fitted with safety torque arm.
Optional remote control upgrade.

MILK RECEIVAL PROCESS

- Bulk milk delivery
- Foam application
- Tanker bay washdown
- Milk floor / Wet packaging

BULK TRANSFER - ADDITIVES

- Bulk oils
- Bulk vitamins
- Bulk flavours
- Milk / Cream products



Safer Hose Reel Rewind Speeds

Equals improved hose safety

Spring rewind hose reels are used throughout industry today for safe storage. However, in some hose handling applications, **excessive spring rewind** speed can result from misuse, causing significant safety issues. Excessive rewind speed can allow rapidly moving hose to strike users or objects resulting in unnecessary injury or damage.

Such issues can be significantly reduced with the new **Reel Tech Safe-R-Reel®** speed control feature.

Safe-R-Reel®, shown, is specifically designed to be added to most common brands of spring rewind reels. It can be also added to an existing reel without major irreversible modifications. The **Safe-R-Reel®** is readily adaptable to the popular Hannay® range of industrial spring reels and there are no visible moving parts. It is **simple to install**.

Depending on the reel capacity, can be tuned to achieve up to **30-50% speed reduction** compared to a standard spring rewind reel. This can be upgraded to vary the rewind speed.

Best of all, the system **does not** rely on Hydraulic clutching or other dependant devices requiring regular service.

Ask us about our complete hose reel packages to suit every application.

Safe-R-Reel™

Reduce hose risk with the world's first

Reel Tech's patented 'No chain/sprocket' Safe-R-Reel gearbox ensures a controlled rewind speed during rewind.



Easily retrofitted to any Hannay® spring reel

MAKE YOUR SPRING REEL SAFER TODAY



spraynozzle.com

Don't wash your money down the drain

Consider How Much Water & Energy Is Saved With Our Nozzles

Open Hose Water Wastage Guide

Wasted flow from various open hose sizes with no trigger gun attached

Hose ID	1 Bar	2 Bar	4 Bar	6 Bar	8 Bar	10 Bar
1/2"	109	155	218	267	308	346
3/4"	239	338	478	585	676	757
1"	348	491	696	852	982	1098

Water flow* in l/pm. via Open Hose/Pipe Bar @(G) pressure

Ask us how a simple nozzle solution can save you thousands of litres daily

AUSTRALIA

27 Shearson Cres
Mentone 3191
spraynozzle.com.au
sales@spraynozzle.com.au
1800 NOZZLE

NEW ZEALAND

532C Grey Street
Hamilton East 3216
spraynozzle.co.nz
sales@spraynozzle.co.nz
0800 NOZZLE

These products may be protected by worldwide patents held by the author.

Warranty: The manufacturer will replace, repair or refund the purchase price of The Product at their option, free of charges, except transportation, if defective in their manufacture. Claims must be notified to the manufacturer in writing within 90 days of sale or shipment either of which occurs first. The Product should be returned to the place of purchase. This warranty is exclusive remedy and the Manufacturer/Distributor shall not be liable for consequential damages, injury or commercial loss. The Manufacturer/Distributor makes no warranty of fitness for a particular purpose and makes no other warranty, express or implied arising from the course of dealing or usage in trade. Specification subject to change without notice. Chemical, Temperature and pressure compatibility is the responsibility of purchaser, compatibility charts available at request. All spray nozzle / reel dimensions are approximate only and may vary from application to application and input variables. Technical assistance available. The company(s) assume no obligation / liability for any such assistance / advice, or any consequences occurring as a result of the application of such advice. Refer to our full T&C. © 2018 Spray Nozzle Engineering / Reel Tech & Associated entities Australia / New Zealand (The manufacturer).