

Spring Rewind Reels

Hannay Series SS900

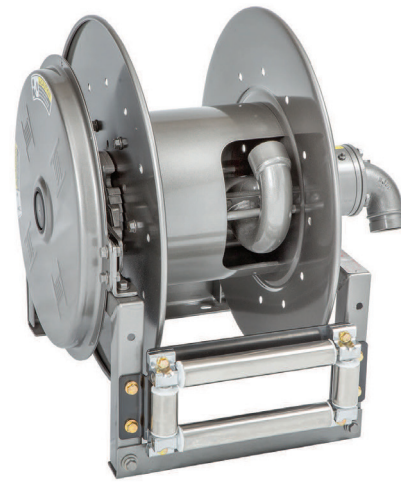
To handle single 1-1/4" or 1-1/2" I.D. hose

Features

- Rollformed channel frame construction.
- Non-sparking ratchet assembly.
- Declutching arbor to prevent damage from reverse winding.
- Standard inlet: 90° stainless steel swivel joint, 1-1/2" female NPT threads, and 2" Victaulic® groove.
- Standard outlet: 1-1/2" female NPT threads.
- Standard pressures to 600 psi (41 bar).
- Temperatures from -25°F to +250°F (-32°C to +121°C).
- 4-way roller assembly.
- SR and VR roller positions: swivel joint is standard on the right. TR roller positions: swivel joint is standard on the left. Other configurations available, must specify.
- Constant tension is available – consult factory.
- 304 stainless steel construction.

Used For

- Bulk Transfer
- Fuel Dispensing (Consult Factory)
- Suction/Discharge (Consult Factory)



Optional
polished
finish

Model Number	Hose Capacity of Reel feet m			Approx. Weight lb. kg		Standard Roller Assy.	Reel Dimensions*** in. mm								
	I.D. in. mm	1-1/4 32	1-1/2 38	NET	SHIP		A	B	D	E	F	G	H	X	Y
	O.D. in. mm	1-13/16 46	2-1/16 52				15.25 387	10 254	23.25 591	25.25 641	24 610	23.88 607	12.5 318	10.5 267	20 508
SS922-23-24B	40 12	25 8	104 47	139 63	R310	13.25 337	8 203	25 635	27 686	22.75 578	25.88 657	13.5 343	8.5 216	21.75 552	
SS920-25-26A	75 23	50 15	156 71	191 87	R310	15.25 387	10 254	28.5 724	30.5 775	24.75 629	31.38 797	17 432	10.5 267	25.25 641	

Notes:

A hose stop is necessary to keep spring from unwinding.

1. Specifications subject to change.

2. Reel models and capacities shown are for standard drag applications; for vertical lift applications, consult factory.

3. Other sizes, from standard components, available on request.

4. Be sure to check dimensions and weights prior to ordering.

NOTICE: A flexible connector must be used between the inlet pipe and the inlet swivel joint.

*** X, Y indicate mounting holes. See page 5.

Available Roller Positions

SR (STD)

VR (OPT)

TR (OPT)

TR (Wallmount)

Technical drawing of the Hannay Series SS900 Spring Rewind Reel. The drawing includes a side view on the left and a front view on the right. The side view shows the reel's profile with dimensions A (total width), B (inlet pipe diameter), C (inlet swivel joint diameter), D (reel body diameter), E (total height), F (total length), G (reel body height), H (inlet swivel joint height), and X (mounting hole distance). The front view shows the reel's face with dimensions A (total width), B (inlet pipe diameter), C (inlet swivel joint diameter), D (reel body diameter), E (total height), F (total length), G (reel body height), H (inlet swivel joint height), and X (mounting hole distance). The drawing also shows the roller assembly and the spring mechanism.